

# Strengjakvartett nr. 2

(1991, rev. 2001)

Snorri Sigfús Birgisson

♩ = c.63  
sul tasto  
*ppp*  
(s.t.)

(Sharps and flats apply only to the notes they precede)

10  
pizz.  
*pp*  
arco s.t.  
non vibr.  
*ppp*  
ord., normal vibrato  
legatissimo  
*pp*  
sul tasto  
ord.  
3

18  
s.t.  
ord.  
s.t., legatissimo  
3  
dim.  
*ppp*

25  
ord.  
♩ = ♩ →  
(♩ = 126)  
*pppp* *ppp*

35  
*pp*  
*p cresc.*  
3  
*mf*

45  
col legno batt. nat.  
*mp* *pp*  
col legno batt. nat.  
*mp* *ppp*  
pizz.  
*pp*  
♩ = c.63  
3 3

54  
arco  
gliss.  
poco a poco cresc.  
3 3 3 3  
gliss.

60 *mf* *col legno batt.* *f* *p* *nat.*

64 *pp espress.* *poco cresc.* *(legatissimo)*

69 *p* *dim.* *mp* *pp* *col legno batt.* *nat.*

$\leftarrow \text{♩} = \text{♩} \rightarrow$   
(♩ = c.126)

76 *p* *mp* *sul pont.*

84 *mf poco a poco cresc.* *f* *ord.* *tr*

94 *pp* *ppp* *poco cresc.*

$\leftarrow \text{♩} = \text{♩} \rightarrow$   
♩ = c.63

104 *p* *dim.*

110 *pp* *legato*

Violoncello

118 *poco cresc.* *(p)*

124 *mp* *p cresc.*

130 *mf* ( $\text{♩} = \text{c.}126$ )

140 *cresc.* *f*

148 **Agitato**

156

163 *legato*

171

177 (legato) *cresc.*

3 3 3 3

184 *ff*

3

189

192

196

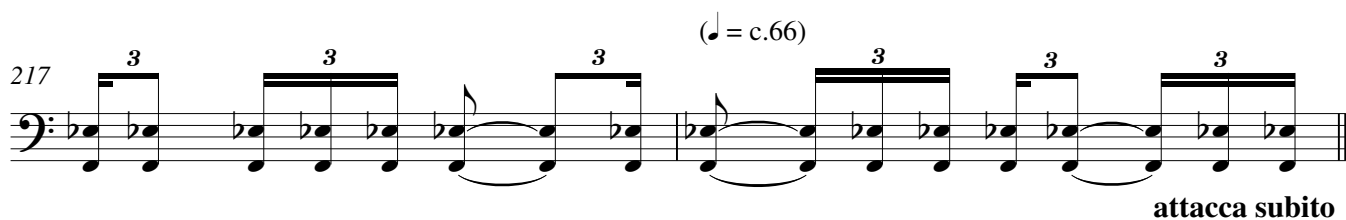
← ♩ = ♩ →

201 *via via più agitato* (♩ = c.63)

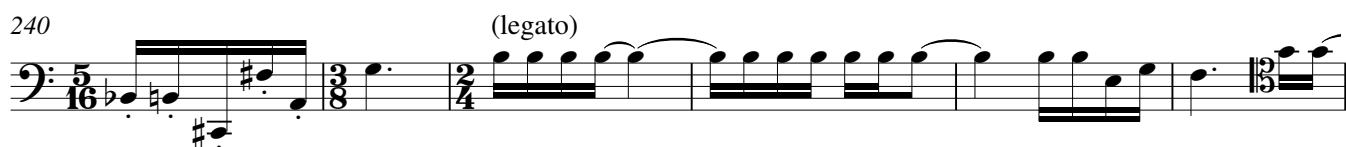
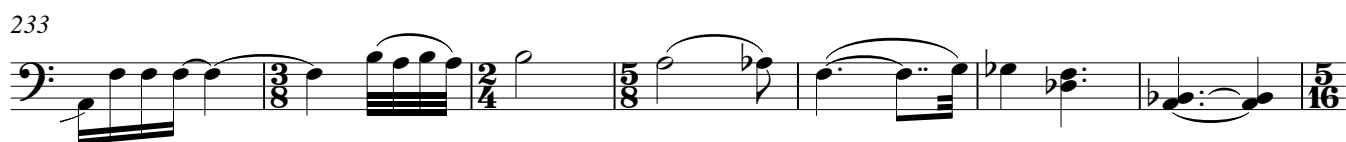
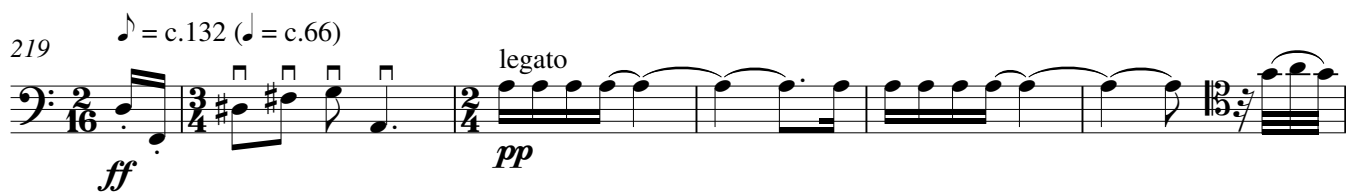
2/4 3/8 2/4

205

4



## 2.





288 con sord. (legato)

*p*

294

*ff* *pp*

300  $\text{♩} = c.40$

*attacca*

3.

306 **Molto tranquillo** ( $\text{♩} = c.66$ )  
(con sord.)  
sul tasto

*pp*

311  $\text{♩} = c.60$

*ppp*

316 **Più lento** ( $\text{♩} = c.48$ ) **rit. molto**  
pizz.

*pppp*